

# SEI x PPS PARTNERSHIP



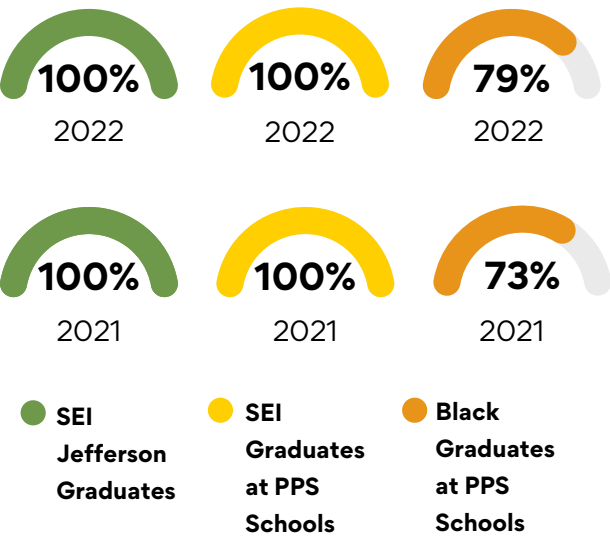
→ THIS REPORT AIMS TO SHOWCASE THE POSITIVE IMPACT OF OUR NON-PROFIT YOUTH AGENCY ON STUDENTS, FAMILIES, AND THE BROADER COMMUNITY. WE WILL ANALYZE DATA COLLECTED THROUGH VARIOUS CHANNELS TO DEMONSTRATE THE EFFECTIVENESS OF OUR PROGRAMS AND SERVICES.



## IMPACT

### Graduation Overview

SEI has been able to maintain a **98%** graduation rate over the last **3** years and **100%** during COVID

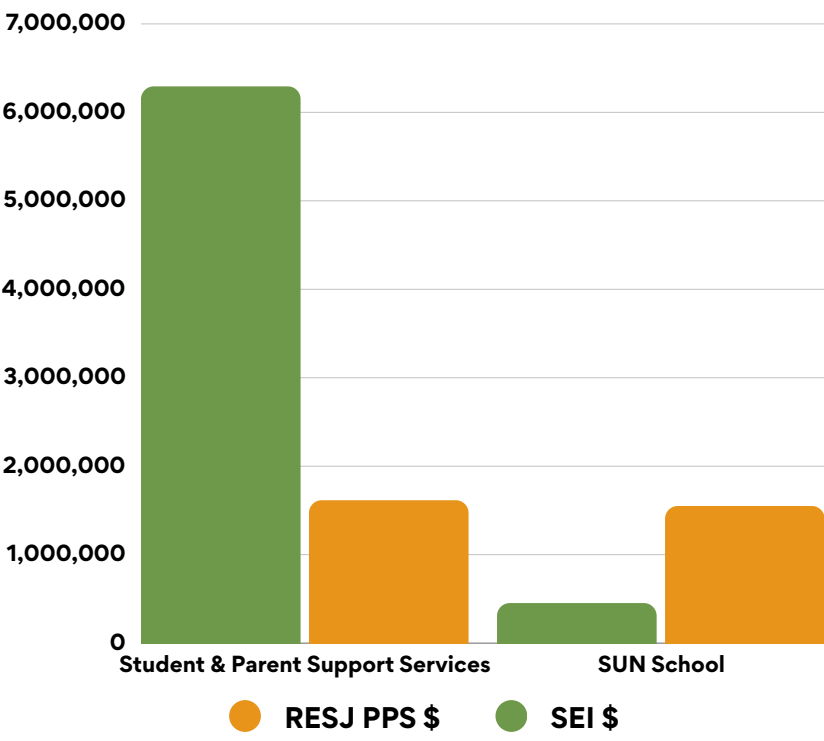


In the last three years, we have awarded over **1.5 million \$** in scholarships to students. Jefferson High School seniors receive **80%** of all the scholarships awarded.

## SEI'S INVESTMENT

### PPS Input vs. SEI Output

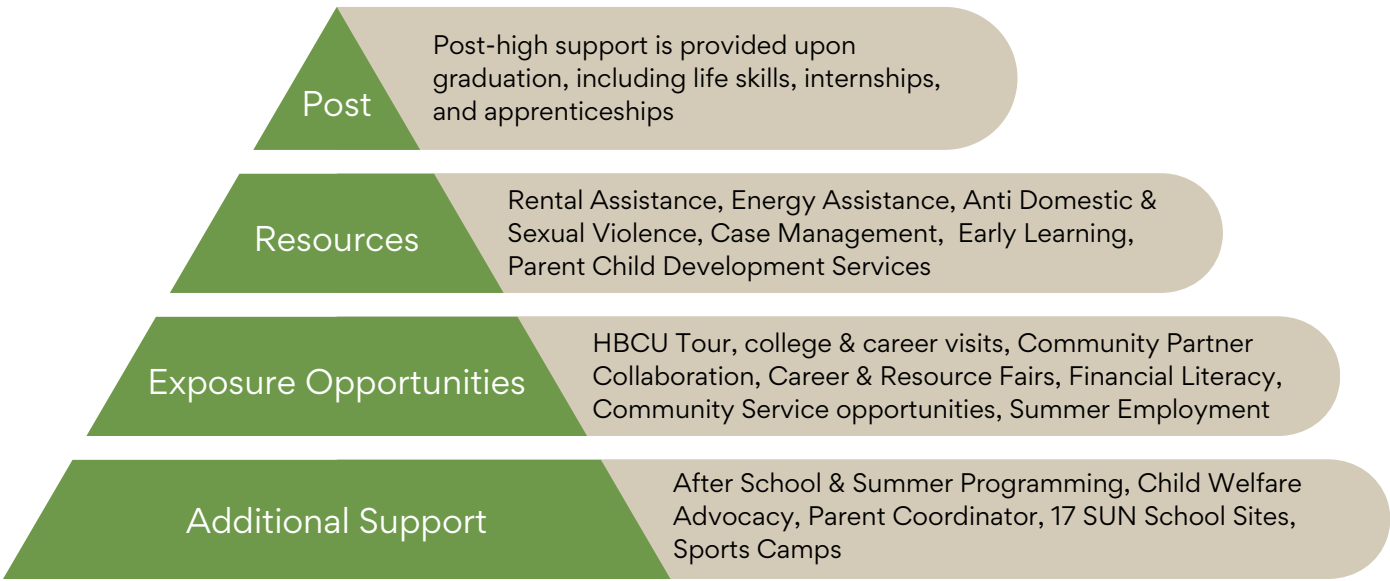
Compare the annual average budget support by PPS and actual expenses covered by SEI over the last 3 years



For every **\$1** awarded to SEI, we invest an additional **\$3** through wraparound support and exposure opportunities.

## RESULTS

### SEI's Resources



We're providing culturally specific solutions. If you follow an at-risk youth home, you'll likely find an at-risk parent or guardian. SEI provides wraparound services for students and families

### SEI's Wraparound Services

